

6" Wall and Window Fan Range

XF150/WF150



- Designed to work effectively in kitchens, the 150mm (6") axial flow kitchen fans are quiet, efficient and can be wall, ceiling or window mounted.
- Incorporating the latest technology, the 150 series has been designed for simple installation, and has a powerful extract rate of 230m³/hr 64 litres per second for the XF version and 220m³/hr 62 litres per second on the WF150.
- The range is ideally suited to use in domestic and commercial applications including kitchens, utility rooms, restaurants, hotels, offices and shops. The WF150 range is suitable for window mounting.
- The units are all manufactured using high impact ABS thermoplastics for strength and durability, aesthetics and easy cleaning.
- Power is provided by a single phase induction motor with pre-oiled bearings for a long, maintenance-free life.
- Designed to comply with the Building Regulations on Ventilation (F1).

Technical Details

Cat. No.

Product type

WALL/CEILING FANS - Base model with fixed internal grille

XF150	Standard model for remote switching
XF150P	As above with pullcord switch
XF150T	Timer model incorporating integral adjustable electronic timer (1-20 mins)
XF150H	Humidity control which is adjustable between 40 and 95%RH Complete with integral adjustable timer (1-20 mins)
XF150HP	Electronic humidity control with pullcord override switch Requires no switched live

WALL/CEILING FANS - Automatic model with internal shutters

XF150A	Standard model for remote switching
XF150AP	As above supplied with pullcord switch
XF150AT	Timer model incorporating integral adjustable electronic timer (1-20 mins)
XF150AH	Humidity control which is adjustable between 40 and 95%RH Complete with integral adjustable timer (1-20 mins)
XF150AHP	Electronic humidity control with pullcord override switch Requires no switched live

WINDOW FANS - Basic model with fixed grilles

WF150	Standard model
WF150P	Pullcord model
WF150T	Timer model complete with pullcord
WF150H	Humidity control complete with pullcord

Automatic model with internal shutters

WF150A	Standard model
WF150AP	Pullcord model
WF150AT	Timer model complete with pullcord
WF150AH	Humidity control complete with pullcord

Packaging

XF150 In outers of 10 measuring 595mm x 245mm x 450mm - weight 11kgs

WF150 In outers of 10 measuring 460mm x 640mm x 240mm - weight 17kgs

Installation

The XF150/150A series of 150mm (6") extractor fans can be wall or ceiling mounted (not pullcord models), and there are two models available in this range. The XF150 model has a fixed louvre internal grille, whilst the automatic model the XF150A, has thermo-activated internal shutters which open 45 seconds after the fan has been switched on (except the manual pullcord operated model XF150AP).

WF150/WF150A this series has been designed for window or wall fixing through a standard 170-184mm (5 1/2"-7 1/4") hole. Note: for wall fixing, please use the FK1 wall vent kit Cat No. 1300. There are two variations in the range, the base model with fixed louvres for additional trickle flow ventilation and the automatic model incorporates thermoactivated internal shutters (except the pullcord operated model WF150AP).

Electrical

220-240V - AC. 50Hz Single phase consuming 20W on the 150 series and 25W on the 150A automatic models. These fans are double insulated and do not require an earth. All wiring must comply with the current IEE regulations. A double pole isolating switch, having a contact separation of at least 3mm in all poles, must be used with a 3 amp fuse fitted. The fan should not be accessible to a person using either the shower or bath and mounted a minimum of 1.8m from the floor.

Additional Data

Maximum pressure: 50 p.a.

Fan speed: 2400 r.p.m.

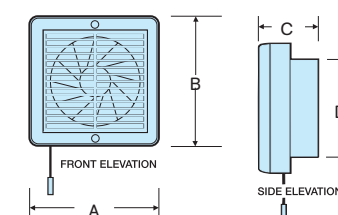
Sound volume: 40.0 dB(A)

Maximum operating temperature: 40°C

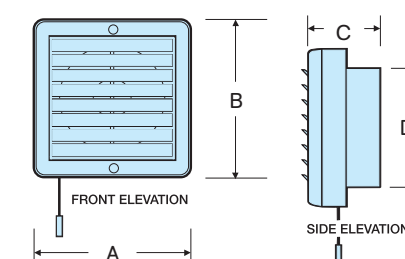
Performance Graphs

(A) XF150 Series 230m³/hr, 64 litres per second (B) WF150 Series 220m³/hr, 62 litres per second

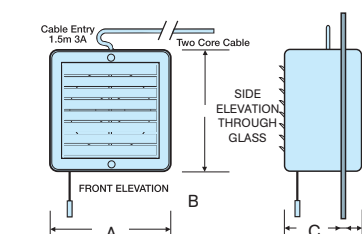
Dimensions XF150 Series



Dimensions XF150A Series



Dimensions WF150 Series



Dimensions (mm)

PRODUCT	A	B	C	D	E	F
XF150	203	203	95	150Ø		
XF150A	203	203	95	150Ø		
WF150	203	203	95	23		

